



**W990**



**KENWORTH.**  
The World's Best.



W990 76-Inch Mid-Roof Sleeper



# W990



## **PRESENCE, POWER AND PERSONAL STYLE WRAPPED IN A WORLD-CLASS DESIGN THAT REDEFINES THE LONG-HOOD CONVENTIONAL.**

Kenworth's long-hood conventional is the enduring symbol of American trucking — a perfect fusion of power, luxury, craftsmanship and traditional styling. For most professional drivers, it also represents the ultimate reward, a uniquely personal icon that stands for their dedication, achievement and sense of pride. Through the decades, our job has been to carefully — and continually — refine this classic without changing what made it great.

Introducing the Kenworth W990, the truck for those who put a premium on making a personal statement. It comes with uncompromising styling, straight ahead performance, premium finishes and lifestyle amenities that put you way ahead of the pack. It just doesn't get any better than this.

# W990

*Something Special*



W990 76 Inch Mid-Roof Sleeper



**BOLD. PROUD. TIMELESS. CONFIDENT. AND PERSONAL. LIFE ON THE ROAD HAS NEVER LOOKED SO GOOD.**

When you drive a Kenworth W990, others notice. It is a look. It is a sound. It is the undeniable recognition of your achievement. With 131.5 inches from bumper to back-of-cab, no one ignores the sheer presence of Kenworth's latest long-hood classic. Nor will they miss your personalized message so clearly reflected in customized brightwork, hand-stitched upholstery and soul-stirring dual chromed stacks. Then there's the hand-masked, hand-finished paint job, with a luster so deep you can see it for miles. And the exclusive styling of the Kenworth W990.... What a showstopper.

A W990 blends the choices you make, from powertrain to paint scheme, with Kenworth's right-the-first-time manufacturing expertise. The result is the best-engineered, hardest-working, most comfortable and downright awe-inspiring truck on the road.

# W990

*Comfort and Style*





## **QUALITY MATERIALS, EXACTING CRAFTSMANSHIP, TIMELESS DESIGN AND SO MANY MORE REASONS TO OPT FOR THE SCENIC ROUTE**

Open the door on a W990 and it's easy to understand why so many professionals would prefer to turn the key of a Kenworth than any other truck. Settle in. Stretch out. Deep, luxurious diamond-and-button upholstery creates a welcoming sanctuary reminiscent of the world's finest luxury sedans. Fully adjustable Air Cushion Premium Plus seats have been orthopedically contoured for comfort and support. The state-of-the-art dash features multiplexed electronic instrumentation, all the gauge options you want, and large, easy-to-reach switches and controls. In-cab storage includes a convenient place to put your thermos; upholstered seat back pockets; center console with drink holders, two 12-volt outlets, a perfect spot to place your cell phone and more.

Then there are all the subtle things you can't see – you simply have to experience. Like Kenworth's high performance heater/air conditioner with the motor thoughtfully mounted on the firewall to minimize cab noise. The flatter toe board angle and suspended throttle and clutch pedals that reduce leg strain. A ride that smooths out all of the road's rough edges. And a look that will stop traffic.







W990 Diamond VIT

# W990

## Sleeper Options

For as long as there have been trucks, the Kenworth brand has always stood for custom-built quality, superior driveability and unparalleled luxury. Fast forward. The W990 is about to redefine your entire perception of interior space, fit and finish in a long-hood conventional. Whether you choose a workhorse-rugged, yet way-above standard Vantage interior, the custom look of a Diamond upholstery package or the pure indulgence of a W990 Limited Edition, you've got everything you need to perform at peak efficiency, and rest well in an environment that takes you closer to home every mile you're away.

Tour a 76 Inch Mid-Roof sleeper or one of our AeroCab sleepers. Note the perfect balance between business and comfort. The thoughtful, convenient and productive layout. The creative and elegant interior appointments. All handcrafted to the same exacting standard we use to build the rest of your Kenworth W990. Look forward to the road.

### 76-INCH MID-ROOF SLEEPER



*For lower-profile and weight-sensitive applications, the Kenworth W990 with a 76-inch mid-roof sleeper reduces weight by 100 lbs over one of our full-height options. The spacious sleeper can be ordered with either the optional back wall storage system or folding upper bunk to meet your individual needs.*



## 52-INCH MID-ROOF SLEEPER



*When the schedule requires a short layover, the Kenworth 52-inch sleeper is a welcome sanctuary. It measures 8 feet wide with a generous walk-through and stand-up-and-stretch headroom.*



## 40-INCH FLAT TOP SLEEPER



*For applications where length and tare weight are at a premium, Kenworth's 40-inch sleeper is a perfect match. It offers a compact, yet comfortable sleeping environment, 22 cubic feet of storage space, overhead shelves, a cell phone cubby and extra large coat hooks specifically designed to hold hard hats as well as coats.*



# W990

## Driver's Studio

The W990 includes the optional 'Driver's Studio' package, a set of premium options that help create a luxurious home-away-from-home living experience for the driver while out on the road for extended periods of time.



*The Driver's Studio includes the 180-degree swivel passenger seat and swivel table option set, which maximizes the driver's living space by combining the cab and sleeper into a large studio, allowing the driver to relax in comfort in the passenger seat rather than being confined only in the back of the sleeper.*

*Convenient LED lighting provides ample interior light throughout the sleeper and an LED light directly above the swivel table with an independent light switch creates a brightly lit workspace.*



*To maximize stand-up room in the sleeper, a pull of the latch unlocks the table which may be rotated 90 degrees above the bunk, also giving you easy access to the drawers below.*

*The Driver's Studio includes a swivel TV mount ideal for flat screen TVs up to 28", a premium audio package with 320-watt amp, 10-inch subwoofer and 8 speakers, and the optional EpicVue pre-wire for satellite TV.*





**KENWORTH**  
THE WORLD'S BEST.



*Large capacity, drawer-style refrigerator/freezer mounted at mid-level for wide open access without bending over.*



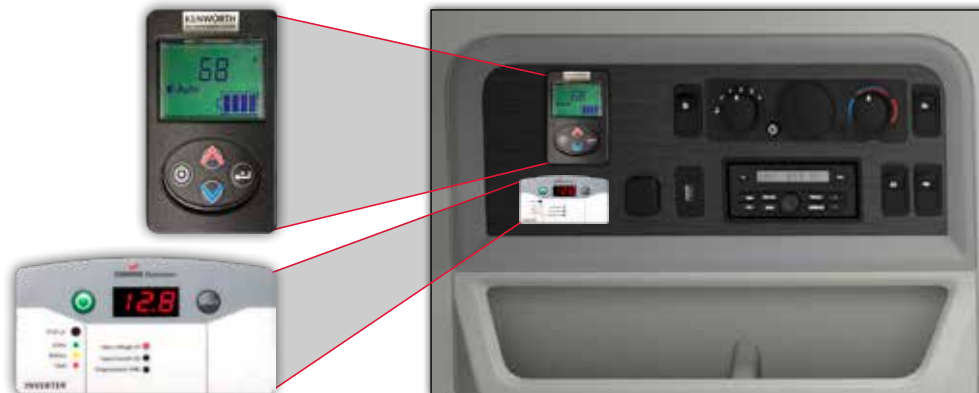
*For dining, the Driver's Studio includes both a drawer-style refrigerator and a convenient space ideal for a microwave. The 1800-watt inverter includes up to four standard 120 volt outlets to power the microwave, a DVD / BluRay player, gaming consoles, laptops and other electrical devices.*



*The Driver's Studio also provides abundant storage space, including a full-size wardrobe for hanging clothes, multiple drawers and cabinets, and a large storage space under the lower bunk.*



*A spacious on-top organizer for keys, cell phone and other necessities; hand-hold cubby for stable access to upper bunk.*



*The sleeper control panel is a convenient central location for all the items you need to control the sleeper environment, along with entertainment and interior lighting.*

*There are two control units on the sleeper panel. One for the heater and air conditioning and the other for the optional 1,800 watt inverter. The no-idle control provides automatic temperature control in both a battery based air conditioning and a diesel fired heater mode. The inverter control switches the optional power inverter on to provide hotel power and battery charging.*

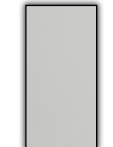
# INTERIOR COLORS AND OPTIONS

The W990 is available in two interior trim levels, the Vantage and the Diamond VIT. Offered in Slate Gray or Tan, either choice comes with three shades of vinyl plus a complementary trim color.

## Vantage Interior



### Slate Gray Interior



Light Slate Gray



Medium Slate Gray

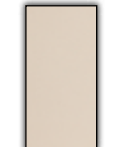


Black

## Diamond VIT Interior



### Tan Interior



Light Tan



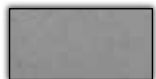
Medium Tan



Tourmaline



### Tan Floor Coverings



Standard Gray Rubber Mat



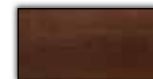
Optional Dark Tan Carpet

### Vantage Interior Accents



Tan and Gray Vantage

### Diamond VIT Interior Accents



Tan Diamond VIT



Slate Gray Diamond VIT

### Slate Gray Floor Coverings



Standard Black Rubber Mat



Optional Dark Gray Carpet

# KENWORTH SEATS

As a true driver's truck, the W990 offers The World's Best® seating arrangements – superior in comfort, adjustability, ride suspension and personal climate control. Upholstery choices include durable vinyl, cloth, Ultraleather and premium leather coverings.

## Key Features and Options\*

Advanced Suspension	Benefit
Micro Adjustable Damping .....	Set exactly the ride feel you want.
Suspension Travel Protection Zone .....	Avoid harsh bump stops.
Base Extension with Independent Full Tilt .....	Optimize both leg comfort and recline angle.
Weight Compensating Auto Level and Memory .....	No need to readjust for different size drivers.
Height Independent Adjustability .....	Maximum comfort at all heights.
Upper Back Adjustability .....	Provides spine-matching contouring.
Adjustable Side Bolsters .....	Customizable side-to-side support.

Climate	Benefit
Heating .....	Warmth in the winter.
Cooling .....	Cooling comfort in the summer.

Longevity	Benefit
Replaceable Cushions .....	Keep your seats looking and feeling new.

## Seat Covering Options



## Extensive Adjustability and Outstanding Comfort Features



\* Not all options available with all seat trim levels  
Ultraleather is a Registered Trademark of Ultrafabrics LLC.

# W990

## Limited Edition Interior



Limited Edition 76 Inch Mid-Roof



# LUXURY TAKEN TO THE NEXT LEVEL

For those who accept nothing less than having it all, there is the Kenworth W990 Limited Edition. Rich black leather, Ravenwood accents and Royal Blue double stitched diamonds combine to create a dramatic environment of unsurpassed comfort and convenience. Where space, elegant design, fine craftsmanship and an abundance of quality details define your surroundings.



*Ravenwood Door and Dash Trim*



*Royal Blue Double Stitched Diamond Door Pads*



*Sueded Charcoal Inserts*



*Perforated Leather with Royal Blue Backing*



*Royal Blue Double Stitching*



*Embroidered W990 Logo*



*Royal Blue Double Stitched Lower Sleeper Lining*



*Black Leather Wrapped Steering Wheel with Royal Blue Stitching*



Limited Edition Day Cab

## LIMITED EDITION DAY CAB



*Upgrade your day runner with a Limited Edition Kenworth W990 Daycab. You get all the amenities of the Limited Edition interior — rich black leather, Ravenwood accents and Royal Blue double stitched diamonds. The Limited Edition is also available with gray GT702 seats.*



## LIMITED EDITION 76-INCH MID-ROOF SLEEPER



*Here's the perfect fusion of luxury, craftsmanship and modern styling. Perfected for applications that require a lower profile. Offering our quiet, spacious, and elegant limited edition interior with configurable options that personalize -- and heighten -- the driving experience. This isn't just a truck. It's a statement about dedication, achievement and a sense of pride.*



# W990

## Driver's Cockpit

### DRIVER PERFORMANCE CENTER

To drive a truck efficiently, drivers must track fuel, vehicle and safety systems performance on the go. But good information isn't the only thing the Kenworth Driver Performance Center offers. The quality, clarity and visual in real-time presentation also means a lot when you're focused on the road. The 5-inch full color, high resolution screen is an industry first. At a glance, it tells you everything you need to know about operating in the sweet spot between performance and efficiency. Truck diagnostics and performance indicators pop up to alert the driver. Trip details and multi-route comparisons allow them to maximize performance every day.





**KENWORTH**  
THE WORLD'S BEST.



## KENWORTH NAV+ HD

NAV+ HD is an in-dash display designed specifically for life on the road. Consider it your personal assistant. With a simple touch to the high-resolution 7-inch color screen – or a spoken command – you have direct access to a full range of valuable and productive features: Truck-specific navigation, roadside assistance, vehicle data, hands-free calling, audio controls (including satellite radio, AM/FM/CD/MP3/USB/Bluetooth), blind-spot camera inputs and the internet. NAV+ HD. Enjoy the road.



*On-board navigation is becoming commonplace, but the NAV+ HD is the first system in the industry to offer optimized routes customized to your truck parameters and your load.*



*With Google Chrome, choose from results and suggestions that appear as you type, including your recent searches and visited websites while Autofill lets you complete forms with just one tap.*



*NAV+ HD makes adding a camera system quick and easy. Real-time screen views for up to four cameras are directly and instantly accessible.*



*Pre-loaded virtual gauges include oil temperature, transmission temperature, manifold boost, present and average fuel economy, DPF status and engine torque.*



*NAV+ HD audio features AM/FM/Weather bands, CD player, USB port for memory devices containing MP3 or audio files, and Bluetooth wireless audio streaming from Bluetooth-enabled devices.*



*NAV+ HD integrates Bluetooth wireless technology with an in-cab microphone and speaker. Just pair it with your compatible Bluetooth phone and talk hands-free.*

# W990 Connected Truck

## ACCELERATE DIAGNOSTICS. EXPEDITE REPAIRS. STREAMLINE COMMUNICATIONS.

It's been shown that up to 80 percent of every service event consists of poor or slow communications and processes — lost time, effort and assets that could be better utilized moving your business ahead. Introducing KENWORTH TruckTech+ Remote Diagnostics and Service Management, a revolutionary, fully integrated system designed to streamline every aspect of fleet maintenance.

The benefits of TruckTech+ begin before your vehicle ever enters the service bay. Kenworth's innovative remote diagnostics technology helps you diagnose and solve potential problems — before they impact your operation.



**KENWORTH  
TRUCKTECH+**  
Remote Diagnostics

- Instant notification of actionable engine and aftertreatment fault information so you can make decisions in real time
- Proactive diagnostic and repair planning assistance with detailed analysis of critical fault codes — before the truck arrives at the dealership
- Once in the shop, PACCAR's proprietary "diagnostic reasoning" engine helps technicians accelerate fault guidance and diagnostics — the first time.



*When an engine fault code is triggered, TruckTech+ Remote Diagnostics sends a notification to the fleet operations manager and to designated Kenworth dealers immediately.*



*The fleet operations manager will have enough information to determine the course of action, whether to direct the driver to keep driving, or proceed to a Kenworth dealer to be serviced.*



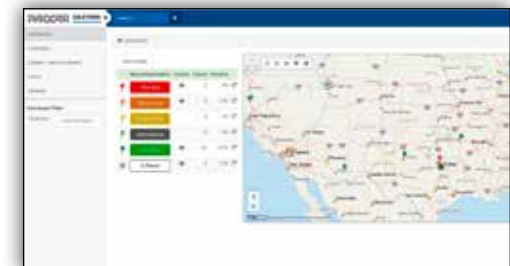
*Kenworth dealers will have visibility to the fault code diagnosis prior to a truck arriving in order to expedite service.*



*Immediate and simple recommended actions are provided to the operator through the Kenworth Driver Performance Center.*



*The system generates a comprehensive fault report that can be viewed online or emailed to the fleet manager.*



*Detailed reports are readily available on each truck currently presenting an actionable code. You can filter the information by specific chassis, severity, make, model, year it was manufactured and location.*

## MAXIMIZE UPTIME AND MINIMIZE THE TRUE COST OF MAINTENANCE.

Much of the downtime associated with truck maintenance can be spent looking up details on a vehicle, leaving messages, returning phone calls, filling out forms, submitting estimates and waiting for approvals. If you want to increase uptime and utilization, reduce the management of service events and trim the true cost of maintenance, you need a system that can help you communicate better information faster and more efficiently. Anytime, anywhere on any device (desktop, laptop, tablet and smartphone) in real time. Welcome to the TruckTech+ Service Management System — a smart, easy-to-use, web-based tool that lets you do in minutes what used to take hours.



Available throughout the Kenworth PremierCare® service network, TruckTech+ Service Management allows you to manage scheduled and unscheduled service events in real time through a web portal that:

- Speeds communications and keeps everything organized – notes, emails, time and date-stamped activity, and electronic approvals
- Eliminates error-prone data entry and the need to access multiple systems or portals
- Centralizes and makes easily accessible all asset information – build, service history, warranty and product updates.



*Schedule, monitor and manage every aspect of truck maintenance through a single web portal — seamlessly via any device, anywhere, anytime.*



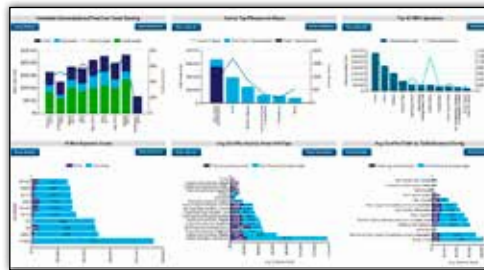
*Collaborate with your Kenworth service team, review and approve estimates and obtain status reports — real-time.*



*Optimize uptime like never before by expediting the process of truck diagnostics and repair.*



*Obtain real-time visibility — and accountability — throughout the entire service event management process via an easy-to-use web-based dashboard that helps streamline decision making every step of the way. For every truck in your fleet undergoing maintenance, regardless of location.*



*Real-time analytics enable you to more efficiently manage preventive maintenance, breakdowns and repairs. Track service events by make, model and engine as well as specific case attributes, such as stage, status, service location, estimated value, asset type, event status and more.*



*Real-time decision support tools turn raw data into actionable intelligence. Proactively identifying potential trouble spots and give them the attention they need to reduce downtime, maintenance costs and service interruptions.*

# W990

## Integrated Powertrain



## PACCAR MX-13

Peak Horsepower (HP)	Peak Torque (LB-FT @ RPM)
510	1,850 @ 1,000
485	1,650 @ 1,000
455 MT <sup>1</sup>	1,550/1,750 @ 900 <sup>1</sup>
455	1,650 @ 900
430 MT <sup>1</sup>	1,450/1,650 @ 900 <sup>1</sup>
430	1,550 @ 900
405	1,450 @ 900

<sup>1</sup>Multi Torque Rating

### Specifications

Configuration	Inline
Bore X Stroke (mm)	130 X 162
Displacement	12.9 Liters
Dry Weight	2,600 Lbs.
Oil System Capacity	42 U.S. Quarts
Governed Speed	2,200 Rpm
Clutch Engagement Torque	937 Lb.-Ft. @ 800 Rpm

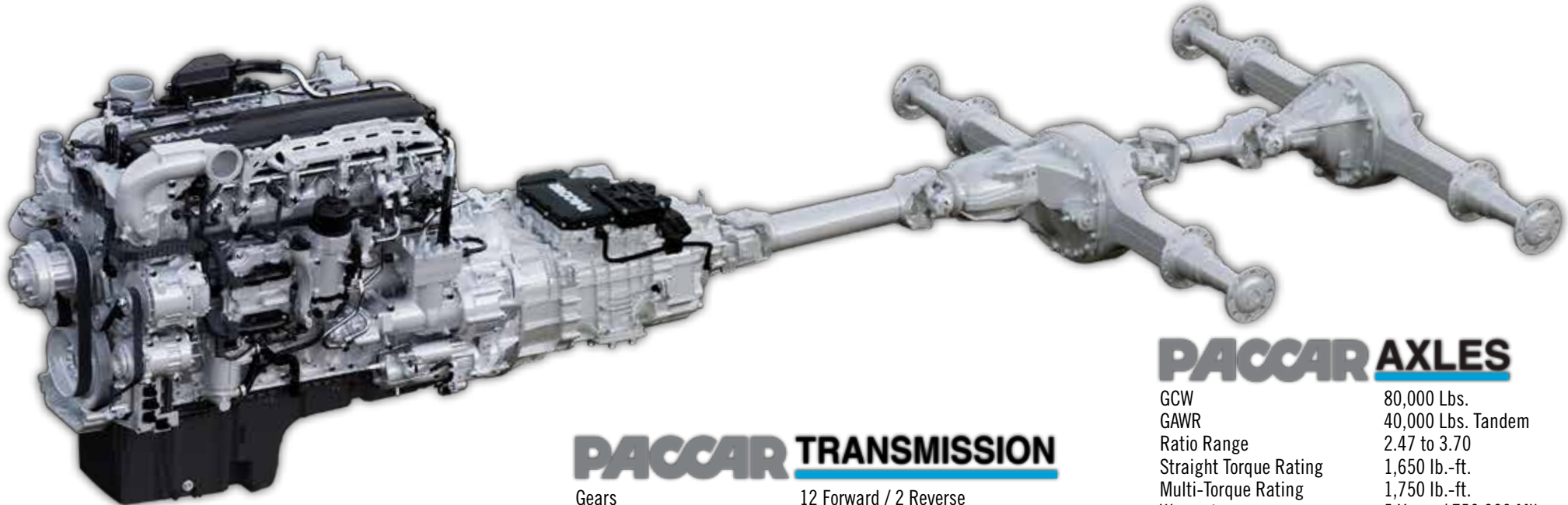
*Extended Protection Plans Available*

Powering the Kenworth W990 are the high quality and reliability of the PACCAR MX engines. The 12.9-liter PACCAR MX-13 engine is designed to meet the demands of heavy-duty truck applications — delivering the increased horsepower and torque needed to move large payloads with ease, even on steep grades.





**KENWORTH**  
THE WORLD'S BEST.



## **PACCAR MX-13**

Configuration	Inline 6-Cylinder
Displacement	12.9 Liters
Dry Weight	2,600 Lbs.
Horsepower	405-510 HP
Peak Torque	1,450-1,850 lb.-ft.
B10 Design Life	1,000,000 Miles
Base Warranty <sup>§</sup>	2 Years / 250,000 Miles

## **PACCAR TRANSMISSION**

Gears	12 Forward / 2 Reverse
Torque Capacity	1,850 lb.-ft.
System Weight	657 Lbs.
Maximum Operating Weight	110,000 Lbs.
PTO Compatibility	8 Bolt, Bottom Mount, 95 HP
Low Lube Protection	Oil Pressure Sensor
Warranty Coverage	
Transmission	5 Years / 750,000 Miles
Clutch	3 Years / 350,000 Miles
Maintenance Intervals:	
Oil Change	750,000 Miles
Clutch	Maintenance Free

## **PACCAR AXLES**

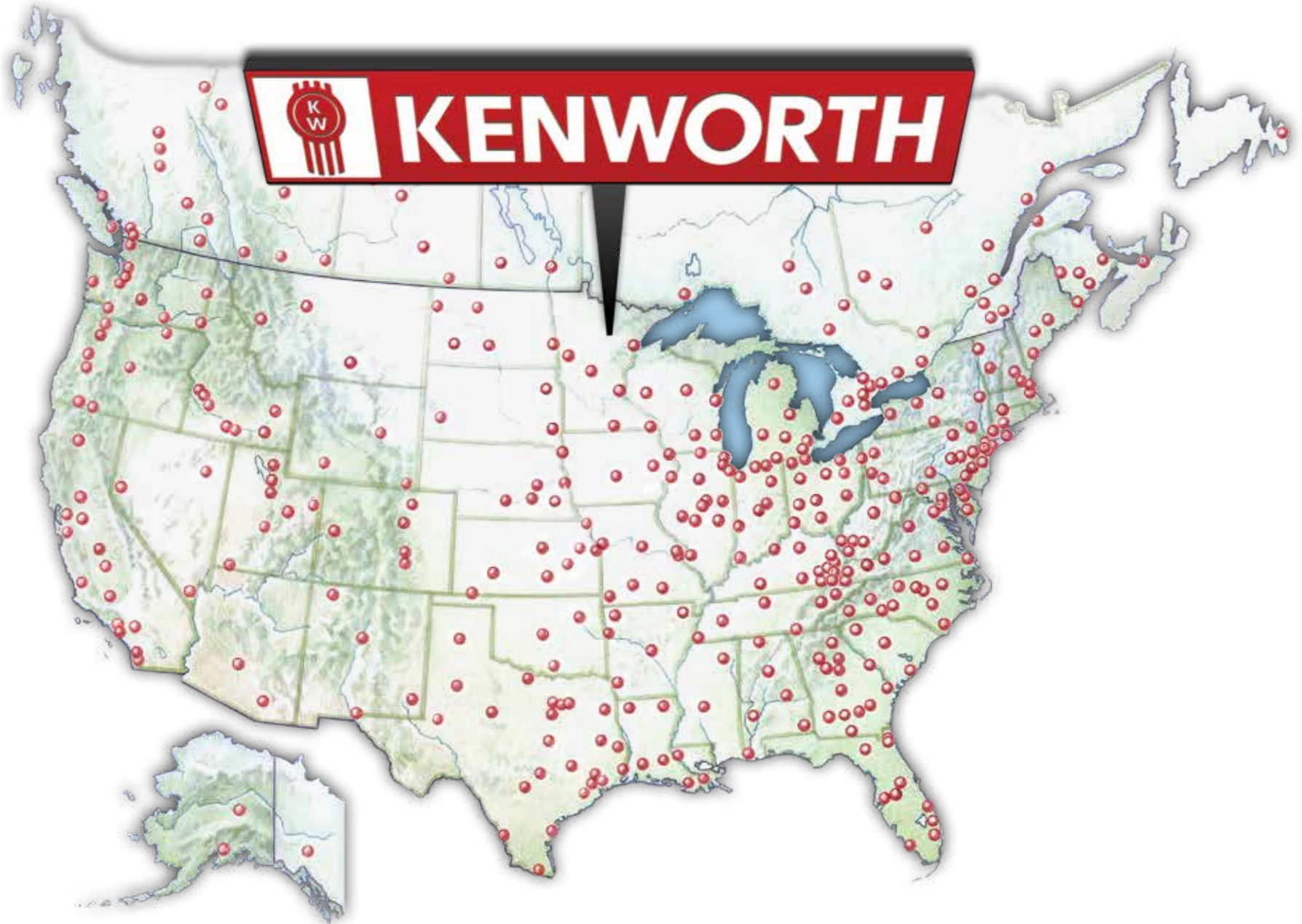
GCW	80,000 Lbs.
GAWR	40,000 Lbs. Tandem
Ratio Range	2.47 to 3.70
Straight Torque Rating	1,650 lb.-ft.
Multi-Torque Rating	1,750 lb.-ft.
Warranty	5 Years / 750,000 Miles

Kenworth's integrated powertrain has been engineered to maximize fuel economy, reliability and performance while delivering The World's Best<sup>®</sup> driving experience. PACCAR powertrain components work together at lower engine RPMs — regardless of road speed, reducing friction and fuel consumption and delivering all the power drivers need.

<sup>†</sup>Determined By Engine Horsepower And Idle Setting  
<sup>§</sup>Extended Protection Plans Available

# *W990*

*Service and Support*





**IN A 24/7 WORLD WHERE CUSTOMERS RIGHTFULLY EXPECT TO HAVE IT ALL,  
YOU NEED YOUR NETWORK MORE THAN EVER BEFORE.**

Kenworth's dealers and you are in this together. From the moment you put your new W990 to work, Kenworth and its extensive dealer network – with over 400 locations throughout North America – are standing by. You will never be far away from expert parts and service support. Trust your Kenworth network to be there, to be prepared, to have your best interests at heart and to be quick about it, whatever it is.



## **PREMIERCARE SETS THE STANDARD FOR CUSTOMER SERVICE**

When you selected your Kenworth, you chose The World's Best® heavy duty truck. You deserve the same level of passion, excellence and attention to detail from those who care for it. Kenworth PremierCare is committed to increasing productivity of every truck in your fleet by offering extended hours of operation, expedited diagnostics, mobile roadside assistance and expert factory-trained technicians. PremierCare Gold Certified Dealers are certified by Kenworth and offer a complete range of PremierCare services that are all focused on maximizing uptime.



**KENWORTH**  
THE WORLD'S BEST.



**EXPRESSLANE: KNOW ALL YOUR OPTIONS – FAST.**

When the unexpected happens, PremierCare ExpressLane provides an expert diagnosis and estimate of the time and cost of repair – within two hours. By knowing what to expect, you can make important decisions regarding the driver and the load faster than ever before.



**PROMPT, PROFESSIONAL SERVICE YOU CAN COUNT ON**

Trust factory-certified technicians with advanced engine training and immediate access to a vast inventory of quality parts to streamline your service solution. In addition, TruckTech+ professionals can help diagnose issues leveraging Kenworth's TruckTech+ Remote Diagnostics before the truck arrives at the dealer.



**EXPERT ASSISTANCE THAT NEVER TAKES A DAY OFF.**

Kenworth PremierCare Roadside Assistance is on call 24 hours a day, 365 days a year to connect you with the help you need anywhere in North America. 1-800-KW-ASSIST puts you in touch with a highly trained Kenworth heavy truck specialist who can manage emergency service needs.



**ALL THE CONVENIENCES OF A HOME OFFICE.**

PremierCare Driver's Lounges offer a comfortable environment that make it easy to relax – or remain productive – for as long as your truck is in the shop. Just another way to say we appreciate your business and value your time.

# W990

## Specifications

### Engine/Powertrain

- PACCAR MX-13 Engine, 12.9 Liter, 405-510 HP, 1,450 – 1,850 lb-ft of Torque .....
- Cummins X15 Engine, 15 Liter, 450-605 HP, 1,650 – 2,050 lb-ft of Torque .....
- TruckTech+ Remote Diagnostics .....

### Exhaust/Aftertreatment

- RH Under DPF/SCR with Single Vertical Side of Cab Tailpipe .....
- RH Under DPF/SCR with Dual or Single Vertical Back of Cab Tailpipes .....
- RH Under DPF/SCR with Dual or Single Vertical Side of Cab Tailpipes .....
- RH Under DPF/SCR with Dual or Single Vertical Side of Sleeper Tailpipes .....
- Horizontal DPF/SCR with Back of Sleeper Vertical Tailpipe .....
- Small Round DEF Tank – 11 Usable Gallons .....
- Medium Round DEF Tank – 21 Usable Gallons .....
- Large Round DEF Tank – 31 Usable Gallons .....
- Clear Back of Cab DEF Tank .....
- Polished Tank Cover and Polished Straps .....

### Transmission Options

- PACCAR 12 Speed Automated Transmission .....
- Eaton Fuller 9, 10, 13, 15 & 18 Speed Manual and Automated Transmissions .....
- Allison 5, 6 & 7 Speed Automatic Transmissions .....
- PTO Options: Factory Installed Transmission Mounted PTOs .....

### Electrical

- Multiplex Electrical System With Centralized Power Distribution Incorporating Plug-In Style Relays & Circuit Protection For Serviceability .....
- 12 Volt Lighting System With Circuit Protection .....
- Circuits Numbered & Color Coded .....
- Key Switch Start & Shutdown .....

### Starting and Charging

- 160 Amp PACCAR Alternator .....
- PACCAR 12 Volt Starter .....
- Three PACCAR Dual Purpose Batteries .....
- Two or Four PACCAR Dual Purpose Batteries .....
- Two or Three AGM Deep Cycle Batteries .....
- Maxwell ESM Ultracapacitor Starting Module .....

Standard

Optional

### Frame

- Frame - 10 3/4" Steel - 120,000 psi - Heat Treated .....
- Frame - 10 5/8" Steel - 120,000 psi - Heat Treated .....
- Frame - 11 5/8" Steel - 120,000 psi - Heat Treated .....
- Single and Double Frame Inserts .....

### Axle and Suspension

- Front Axles - PACCAR, 20,000 lb. ....
- Front Axles - Meritor, 12,500 lb. ....
- Front Axles - Meritor or Dana Spicer 12,000 to 22,800 lbs. ....
- Front Springs - Taperleaf w/Shocks, 12,000 lb. ....
- Front Springs - Taperleaf w/Shocks, 13,200, 14,600, 16,000, 18,000, 20,000 and 23,000 lbs. ....
- Rear Axle - PACCAR, 40,000 lbs. Tandem .....
- Single Rear Axles - Meritor or Dana Spicer from 16,000 to 30,000 lbs. ....
- Tandem Rear Axles - Meritor or Dana Spicer, 40,000 to 52,000 lbs. ....
- Tridem Rear Axles - Meritor or Dana Spicer, 69,000 and 78,000 lbs. ....
- Rear Suspension - Kenworth AG400L .....
- Single Rear Axle Suspensions - Kenworth, Reyco, Neway and Hendrickson with capacities from 20,000 to 31,000 lbs. ....
- Tandem Rear Axle Suspensions - Kenworth, Reyco, Hendrickson, Chalmers and Neway with capacities up to 52,000 lbs. ....
- Tridem Rear Axle Suspensions - Kenworth, Hendrickson, and Neway with capacities up to 78,000 lbs. ....

### Brakes

- Brakes, Front - Air Disc .....
- Brakes, Rear - Air Disc .....
- Brakes, Front - Air Drum .....
- Brakes, Rear - Air Drum .....
- ABS, ATC, ESP - Bendix .....
- Bendix Wingman Fusion .....

### Wheels / Tires

- Wheels – Steel 22.5" .....
- Tires – Bridgestone 295/75R22.5 .....
- Bridgestone, Michelin, Goodyear and Yokohama Tires Available .....
- Polished and Non-Polished Alcoa or Accuride Aluminum Wheels .....
- 24.5" Tires and Wheels .....

Standard

Optional



**KENWORTH**  
THE WORLD'S BEST.

### Fuel Tanks

- 24.5" Round Aluminum – 100 Gallon Capacity..... ●
- 22" Round Aluminum – 56 to 120 Gallon Capacity Under and Back of Cab..... ●
- 24.5" Round Aluminum – 60 to 150 Gallon Capacity Under and Back of Cab..... ●
- 28.5" Round Aluminum – 60 to 177 Gallon Capacity Under and Back of Cab..... ●
- Hydraulic and Split Tanks Available..... ●
- Heavy Duty 7" Fuel Tank Support/Straps..... ●
- Polished Aluminum Tanks and Polished Straps..... ●

### Battery and Tool Boxes

- Steel Battery Box with Aluminum Step Cover..... ●
- Aluminum Battery Box..... ●
- Cantilever Back of Cab Battery Box..... ●
- Battery Box Between Rails..... ●
- In Cab Battery Box..... ●
- Extended Battery and Tool Boxes..... ●
- Additional Tool Boxes Frame Mounted Behind Sleeper..... ●

### Bumpers

- Straight Aluminum Channel - Natural Finish or Polished..... ●
- Steel Channel - Painted or Chrome..... ●
- Tapered Steel Channel - Painted or Chrome..... ●
- Straight Chrome Texas Style Bumper in Chrome or Stainless Steel..... ●
- Steel Box - Painted or Chrome..... ●

### Cab / Hood / Interior

- Cab - Stamped Aluminum..... ●
- Hood - 5-Piece Metton Straight Hood with Bolt on Fenders, 131.5" BBC..... ●
- 40-Inch Low-Roof Flat Top Sleeper..... ●
- 52-Inch Mid-Roof Aerodyne Sleeper..... ●
- 76-Inch Mid-Roof Aerodyne Sleeper..... ●
- Nav+ HD..... ●
- Complex Reflector Halogen Headlamps..... ●
- Aerodynamic Breakaway Heated Mirrors..... ●
- Adjustable Telescoping Tilt Steering Column..... ●
- Standard Vantage Vinyl Headliner and Cab Back Panel..... ●
- Diamond VIT Deluxe Interior..... ●

Standard

Optional

### Cab / Hood / Interior

- Limited Edition Black Cab and Sleeper Interior..... ●
  - Black Dash
  - Black Diamond Door Pads with Royal Blue Stitching
  - Black Leather Wrapped Steering Wheel with Royal Blue Stitching
  - Black Leather Heated and Ventilated High Back Seats with Royal Blue Stitching
  - Black Lower Sleeper Cabinets
  - Black Diamond Lower Sleeper Panels with Royal Blue W990 Embroidery
  - Revenwood Dash and Door Trim
- Kenworth GT701 High Back Driver Seat..... ●
- Kenworth GT701 High Back Toolbox Plus Rider Seat..... ●
- Kenworth GT702 High Back Driver and Rider Seats..... ●
- Kenworth GT703 Heated and Ventilated High Back Driver and Rider Seats..... ●
- Power Door Locks..... ●
- Passenger-side Electric Window..... ●
- 3-Window Back of Cab Window Option..... ●
- Polished Stainless Steel Exterior Sunvisor with Integral Marker Lights..... ●

### Driver Assistance Technology

- Predictive Cruise Control..... ●
- Collision Mitigation..... ●
- Stability Control..... ●
- Driver Performance Assistant..... ●
- Lane Departure Warning..... ●
- Side Object Detection..... ●

### Special Equipment & Options

- Back-up Alarm..... ●
- Daytime Running Lights..... ●
- Multi-function Engine Connector For Body Builder Interface..... ●
- Bodybuilder Harness to End of Frame..... ●
- Custom Frame Drilling and Frame Layout..... ●
- Factory Installed Watson Chalin Lift Axles
  - 8K, 10K, 13.5K, 20K and 22K..... ●
  - Pusher and Tag Axle configurations..... ●
  - Steerable and Non-Steerable Options..... ●

Standard

Optional

# HEAVY-DUTY SUPPORT WHENEVER - AND WHEREVER - YOU NEED IT

The reliability and moneymaking potential of your business relies on the dependability of your support system – another great reason to invest in a Kenworth.



Combining premium Kenworth trucks and personalized local service, PacLease provides customized full-service lease, rental and contract maintenance programs designed to meet the specific needs of customers.



For over 50 years and through all economic cycles, PACCAR Financial has been providing Kenworth owners with innovative financing solutions that can be customized to meet individual business needs.



PACCAR Genuine Parts are first-fit parts that keep a Kenworth as original and reliable as the day it rolled out of the factory. Keep your truck and engine well-maintained with the quality, performance and warranty delivered from PACCAR Genuine Parts.

To view Kenworth W990 operating instruction videos, download the Kenworth Essentials App and access the W990 Driver Academy Videos under The Driver's Truck tab.



For Android devices, scan the QR code above or go to the Google Play Store and search "Kenworth".



For iPhones and iPads, scan the QR code above or go to the Apple Store and search "Kenworth".



A PACCAR COMPANY

KENWORTH TRUCK COMPANY  
P.O. Box 1000  
Kirkland, Washington 98083-1000  
(425) 828-5000

CANADIAN KENWORTH COMPANY  
6711 Mississauga Road N.  
Mississauga, Ontario L5N 4J8  
(905) 858-7000

*\*Requires satellite radio subscription.*

Note: Equipment and specifications shown in this brochure are subject to change without notice. Consult with your Kenworth dealer at time of ordering for standard and optional equipment.



W990/18

© 2018 Kenworth Truck Co.